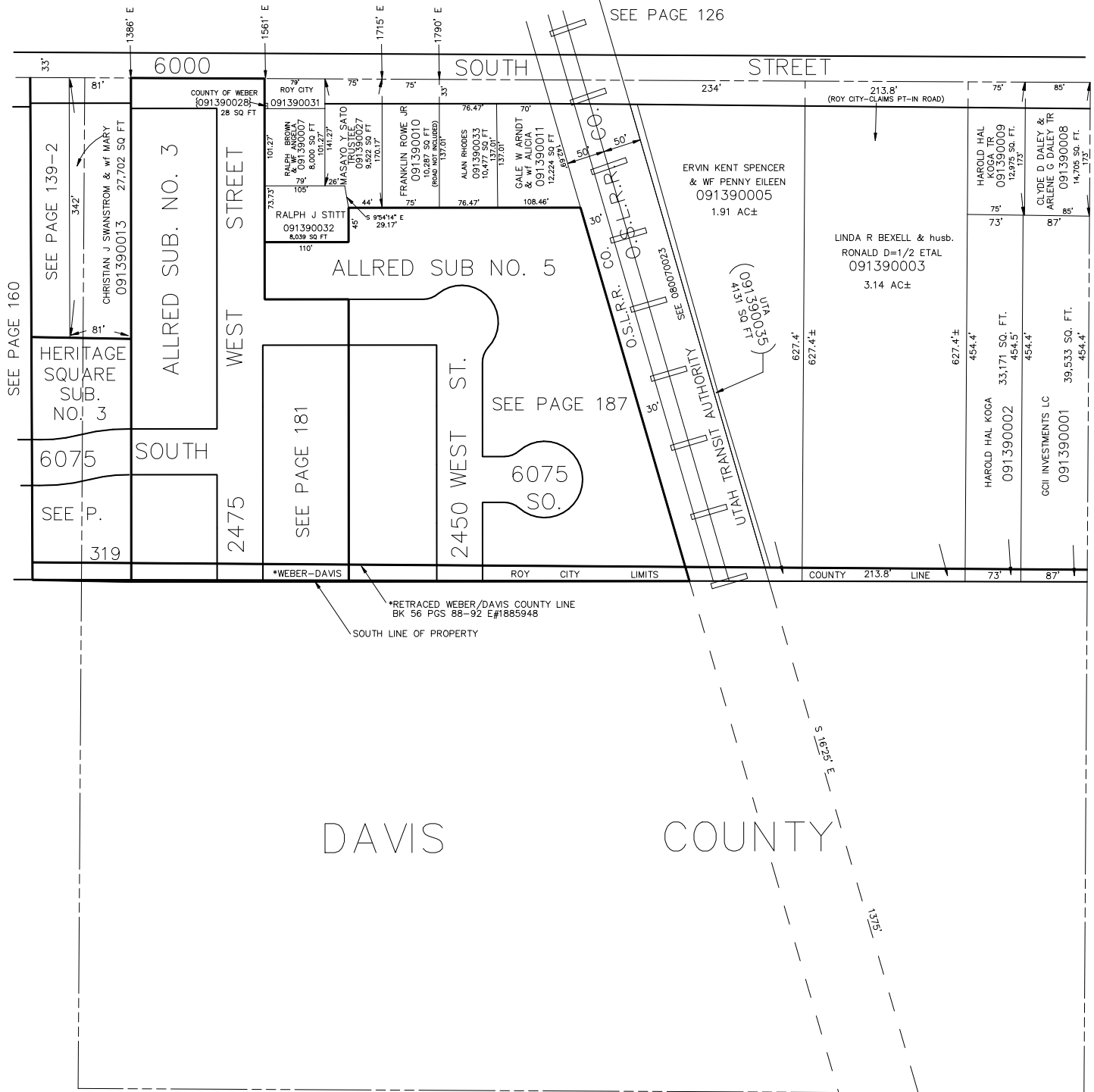


N.E. 1/4 OF THE S.W. 1/4
SECTION 23, T.5N., R.2W., S.L.B. & M.

IN ROY CITY

SCALE 1" = 100'

TAXING UNIT: 41



SEE PAGE 160

SEE PAGE 139-2

HERITAGE SQUARE SUB. NO. 3

6075

SEE P.

319

ALLRED SUB. NO. 3

SOUTH

2475

SEE PAGE 181

2450 WEST ST.

SEE PAGE 187

6075 SO.

*WEBER-DAVIS

ROY CITY LIMITS

COUNTY LINE

DAVIS

COUNTY

SEE PAGE 126

SEE PAGE 129